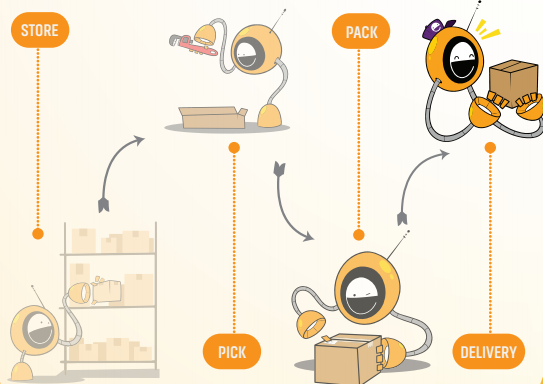
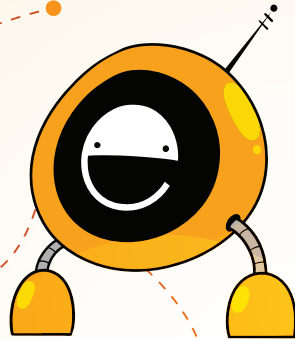


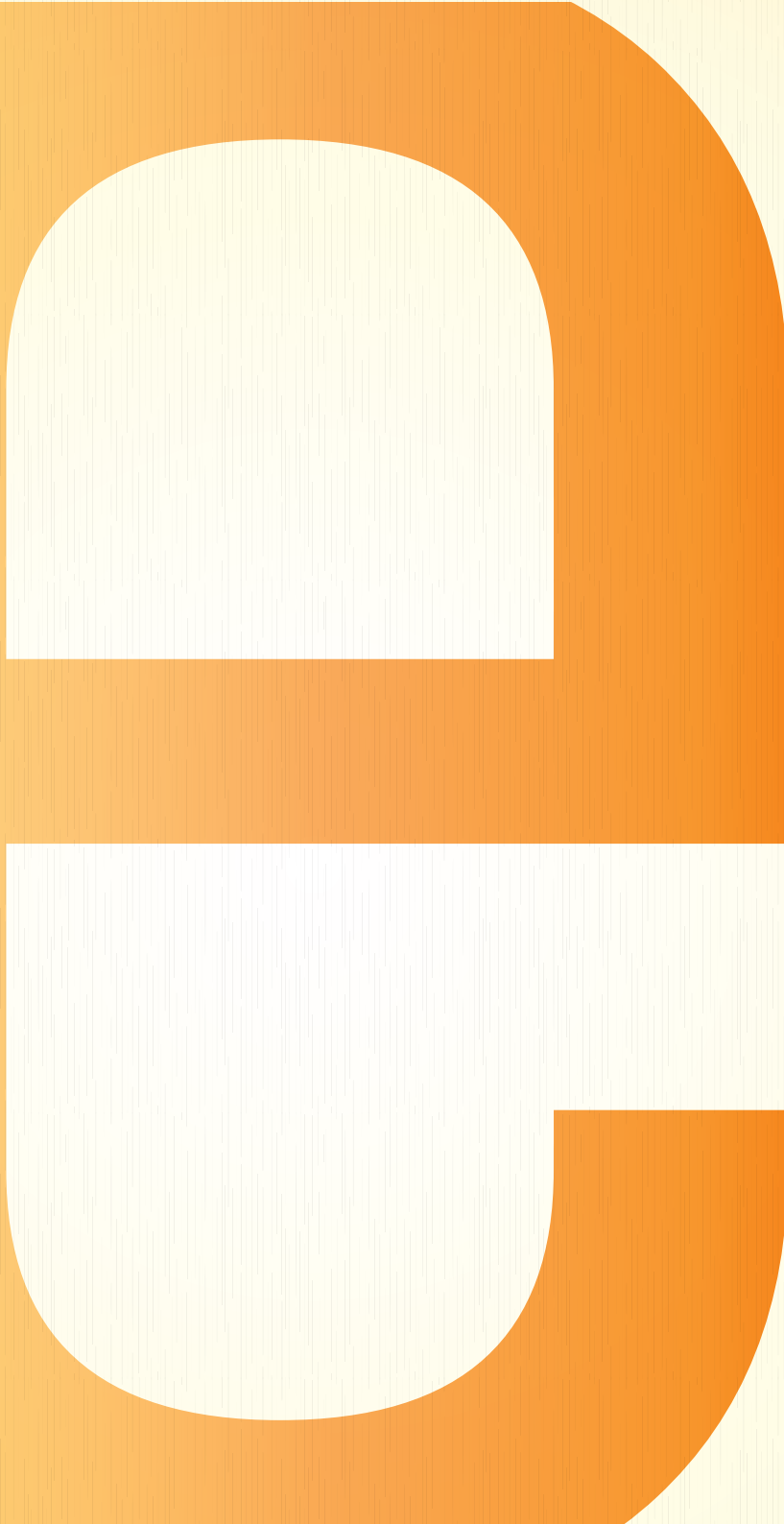
Your One Stop E-Commerce Fulfillment Solution

Ti:Me

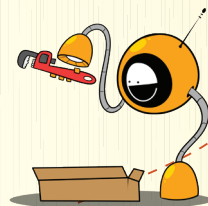
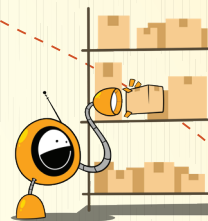
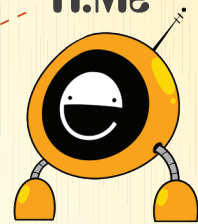


css eLogix
TIME WAITS FOR NO ONE

www.csselogix.com



Ti:Me





Director's note

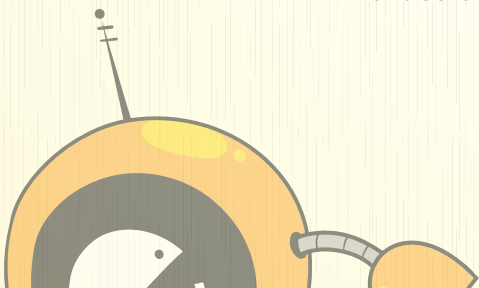


Dr. Britto Satheesh
Director

CSS eLogix is pleased to present to you its service offering within the domain of e-commerce fulfillment and delivery within UAE ,GCC and International with our unique technology aggregating warehouses and omni-channel platform. Fulfillment is not just about preparing and packing orders but a well-organized e-commerce fulfillment warehouse coupled with a strong ERP software helps your business run smoothly. With unprecedented e-commerce growth post pandemic particularly in the online sector, we believe an organized inventory management tool and trend setting last mile partners helps you maximize your business e-commerce returns. Here at CSS eLogix we provide you with end-to-end seamless solutions for every aspect of your e-commerce requirements. Our dedicated team of experts generate innovative solutions to create the optimal online shopping experience and help your business grow by facilitating worldwide reach.

To be successful in e-commerce, you need to think bigger than e-commerce. The core question retailers must ask themselves first is not, "What e-commerce investments do I need to make?" but rather, "What consumer experience do I need to offer?" We as a business entity want to provide that consumer experience to propel your business to heights you envisioned. Therefore, Our team will always assist in constant process enhancement and provide unique reporting tools for you to understand your customers and your sales in a much thorough and detailed manner.

We look forward toward to establishing our long-term alliance with our clients and we always articulate in the direction of a win-win collaboration.







Company Profile

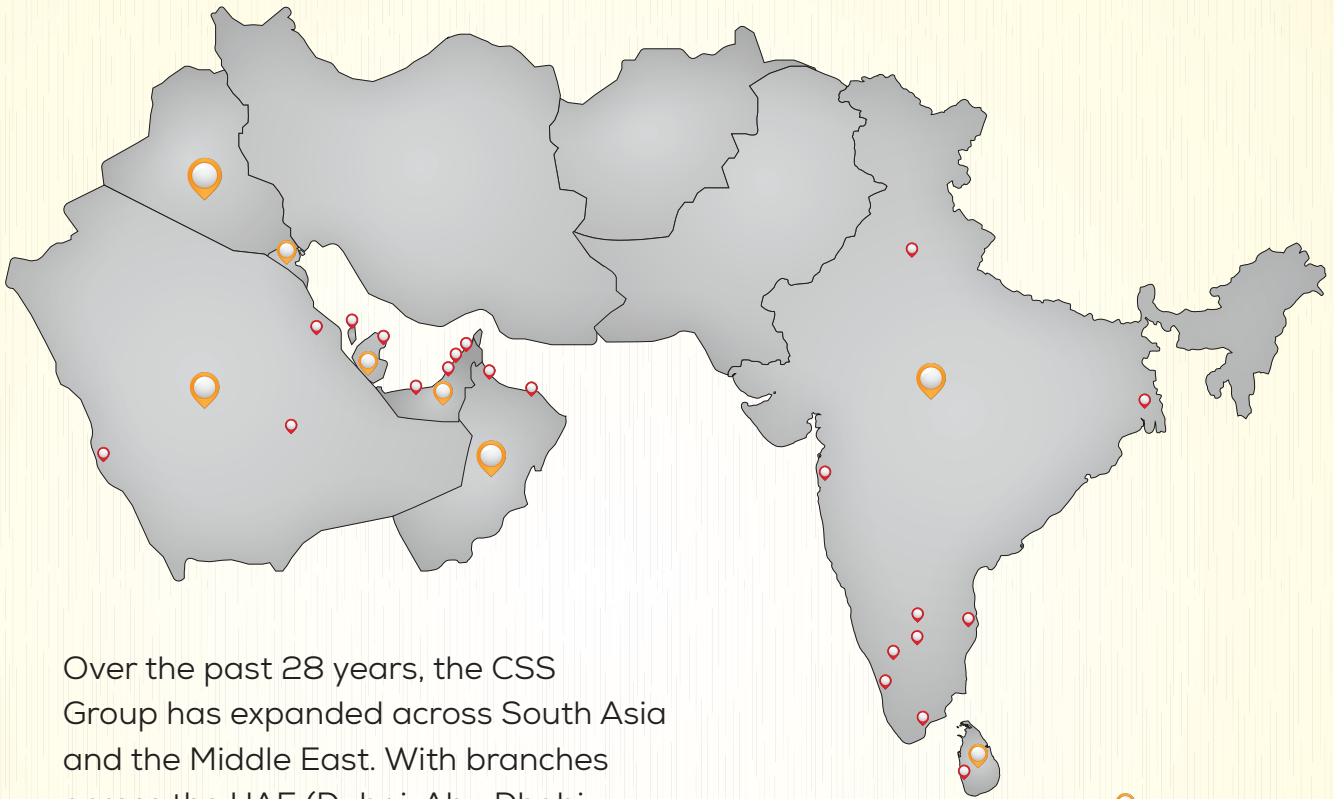


The Consolidated Shipping Services (CSS) Group is a global leader in international transport & logistics. Constantly adapting to its customers' changing needs, the company has enriched its expertise to become a tier-one logistics and freight forwarding partner in the GCC, with integrated logistic networks in Africa, Middle East, Europe, and the Americas.

The Group delivers value to offering fast, quality, and delivery services via a network of partners. Consolidated Shipping Services Group's scalable, direct-service technology platforms through its team of skilled salespeople support network operations, designed to optimize delivery efficiency and effectiveness.



CSS Group Locations



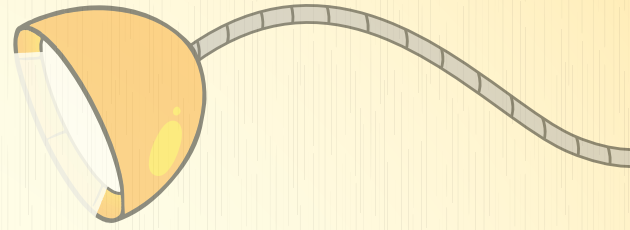
Over the past 28 years, the CSS Group has expanded across South Asia and the Middle East. With branches across the UAE (Dubai, Abu Dhabi, Sharjah, and RAK), Bahrain, Saudi Arabia, Kuwait, Oman, Qatar, Sri Lanka, India and Iraq the CSS Group works with the best talent, resources and partners across the globe to enable premium and high-quality services to its customers.

📍 Countries

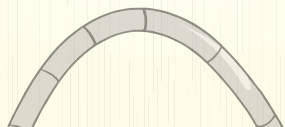
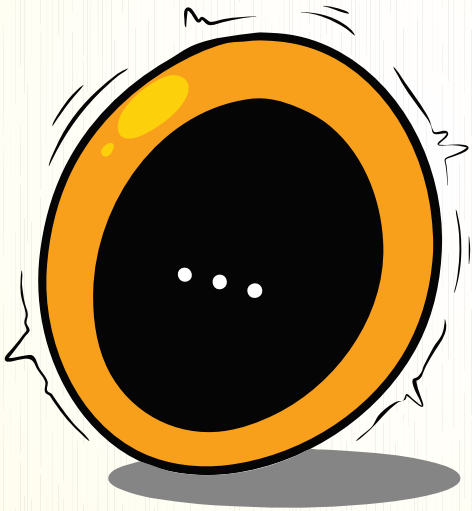
📍 Branches



Why CSS eLogix ?



Welcome to CSS eLogix and with both logistics and fulfillment at your doorstep, we can be your one stop solution to your whole supply chain management. We believe our expertise can make a huge difference to the ever-growing e-commerce industry within UAE and Middle East. Our services are global and with CSS having fully functional depots, eLogix aims to cater to your needs with seamless transitions from the moment you connect with us.



With CSS eLogix as your fulfillment partner, we help you to:

● **Extend Your Reach**

With the range of fulfillment network and last mile partners we possess, greater population can receive your products.

● **Keep Your Focus**

With fulfillment taken care by CSS eLogix, our clients can focus solely on business expansion and scalability

● **Lower Operational Costs**

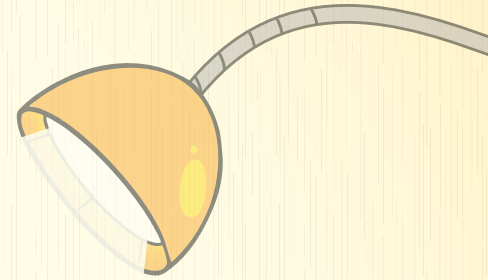
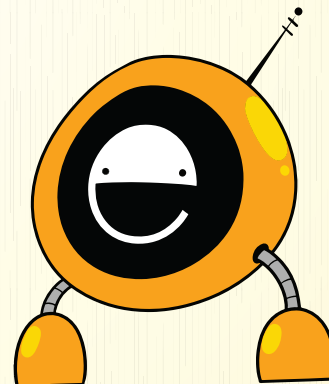
Your business OPEX can improve with our omni channel and with those services we provide.

● **Offer Customized Packing**

We can customise every order that goes out of our fulfillment service thereby greatly increasing your business portfolio.

● **Software Advantage**

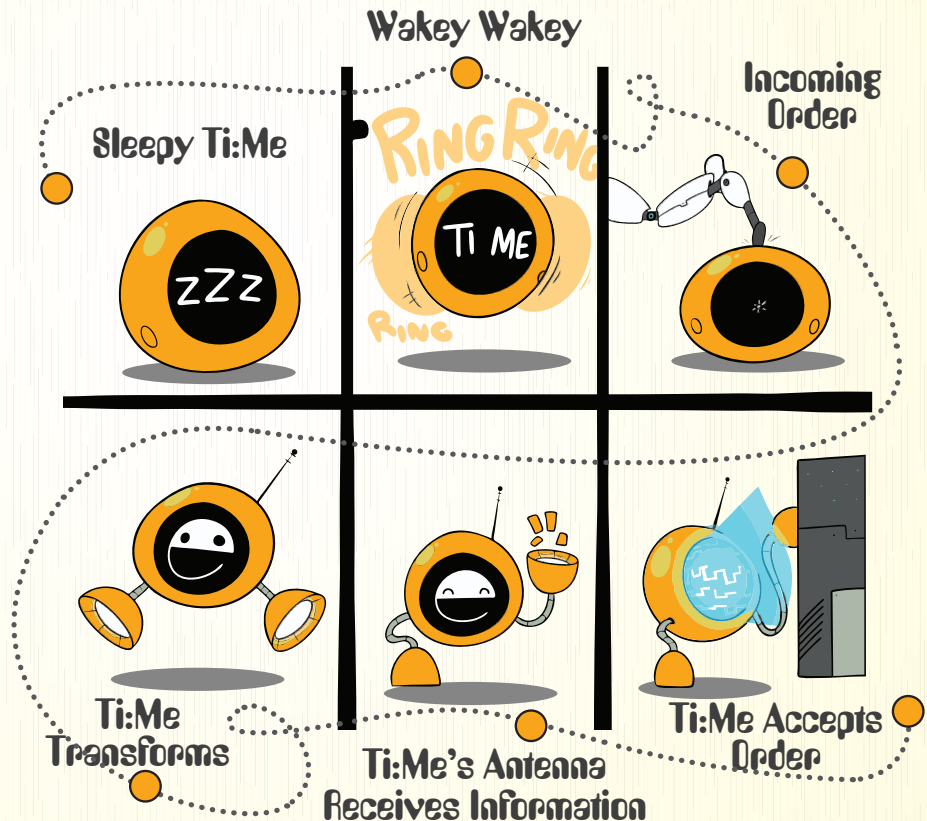
Technology makes fulfillment seamless and thus our software is state-of-the-art for your fulfillment requirements.



CSS eLogix Mascot

“Our brand story grew with Ti:Me and one could see how she transforms from a sleeping clock bot to a fully functional robot who assist you from the moment order comes in till the time it reaches customer’s door.”

CSS eLogix stands out in many aspects from their competitors and one such aspect is having our Mascot, Ti:Me—who can be your guide in navigating across our services. Ti:Me – The proud face of our company and she will be your assistant or as we call it your one stop friend for e-commerce fulfillment.



“How Ti:Me and CSS eLogix goes from your online store to your customer’s door

1. Connect

Connect your store and import your products with our dedicated system.

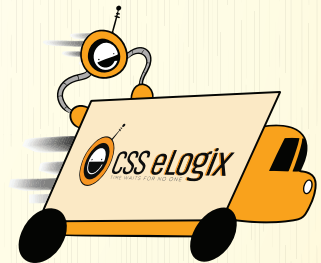


2. Store

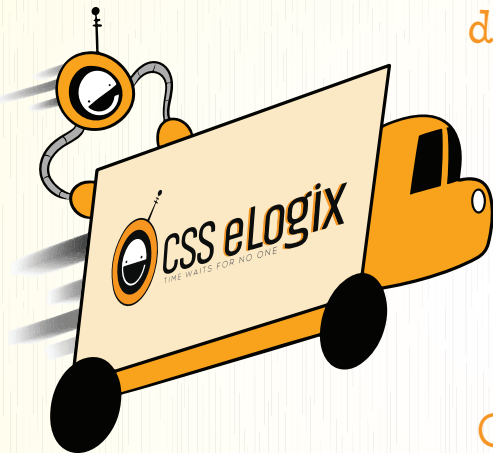
We store and manage your inventory in our fulfillment centre.

3. Ship

As soon as the customer places the order, we pick, pack, and deliver either by express (2 hours/ same or next day) or through standard options for international.

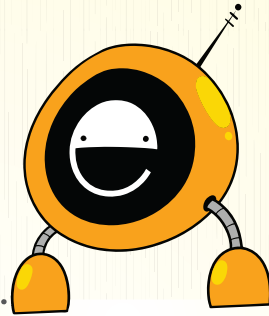


“We want customers to enjoy their online purchases and above all we want to enhance their experience when it comes to trusting companies in delivering their goods safely and professionally. We aim to exemplify eloquence, and above all generate a platform suitable for our customers to use with ease and comfort.



Our technology seamlessly integrates with online platforms hence leaving end customers with hassle free experience.”

“Your Complete One Stop
Fulfillment Solution Through CSS eLogix”



**Express
Delivery**

Same Day /
Next Day Delivery.

99%

Accuracy Rate
In Fulfilling Orders.

**Multi-Channel
Fulfillment**

Reduced Stock
Costs for Clients.

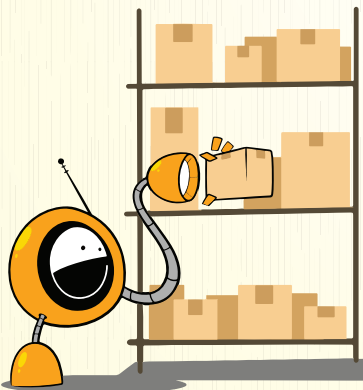
- Bring cost savings to your bottom line.
- 9% Higher cart conversion through quick delivery options.
- Reduce your cart abandonment rate.



Powerful network of fulfillment centres

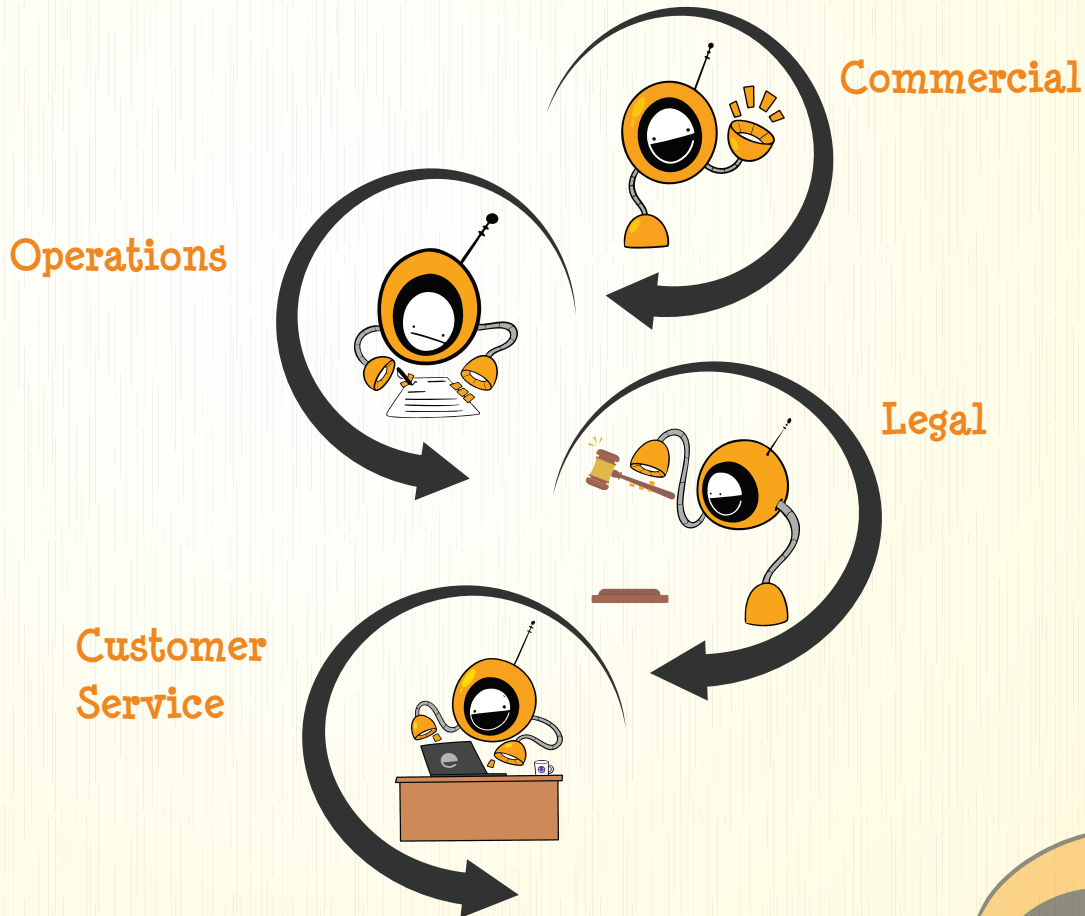
At CSS eLogix we have a powerful resource pool of growing fulfillment centres and we help you determine optimal inventory placement to improve delivery speeds and reduce shipping costs. Each of our warehouses can be remodelled or scaled to stock additional inventory as and when required, hence giving customer the chance to grow with us.

- We can give you competitive storage rates for your e-commerce inventory.
- Easy-to-understand pricing.
- Wide range of fulfillment services enabled in each warehouse/centre.
- Transparency of performance for accountability.
- All warehouses are equipped with safety devices, handheld scanners, security cameras, and racks.



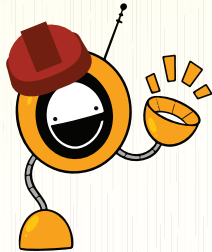
The Core Team

CSS eLogix takes great pride in providing quality service to our clients hence there is a dedicated team from warehouse to management set up to ensure, our clients welfare is always the priority. It is imperative that we maintain the service level with clients throughout the calendar year and with this in mind, the team of experts we have are able to draw on their broad commercial, operational and legal experience, and work simultaneously to provide consultancy and expertise required to achieve your desired goals.



Warehouse Management Solutions (WMS)

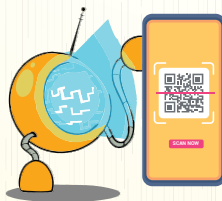
Labor Management



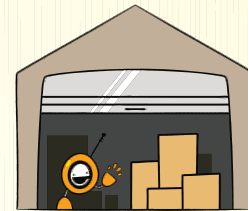
Scalability



Mobile Scanners



WMS Management



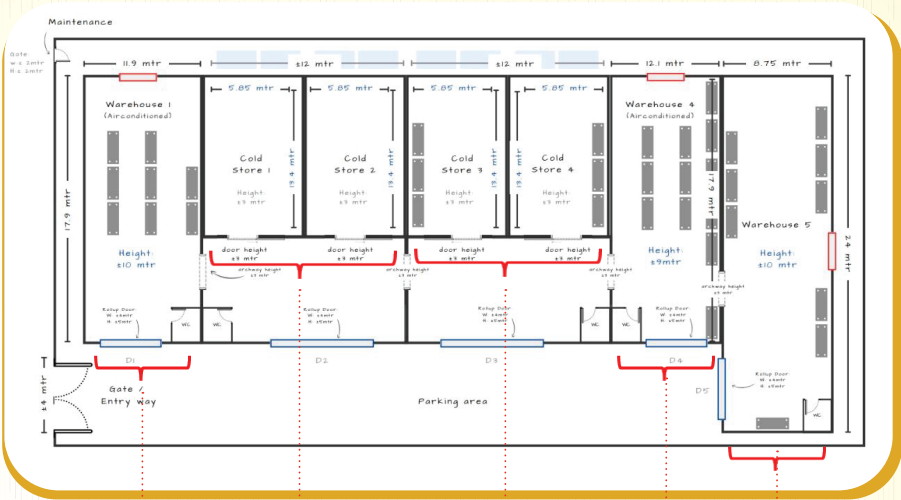
Bar Code Scanner



Automated Invoices



Warehouse Layout & Strategic Location



Zone	Storage Unit Purpose	Temperature Type
1	Short Storage e-commerce B2B	Ambient
2	ColdChiller e-Commerce Storage	Freezer/ Chiller Unit
3	ColdChiller e-Commerce Storage	Freezer/ Chiller Unit
4	Short Storage/ e-commerce B2B	Ambient
5	e-commerce B2C Floor	Ambient

The highlighted warehouse is strategically located in **Dubai Main Land, Ras Al Khor.**

The advantage of this warehouse is that,

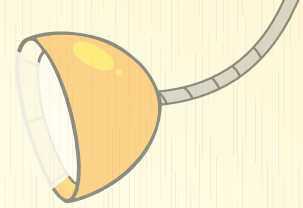
- Covers all exits from Dubai to other locations.
- Cut off times can be extended upto 5 pm.
- Equipped with ambient, chiller and frozen in one single warehouse space.

Ti:Me's Office



For those customers, who have international B2B movement, we also encourage and provide warehousing solutions inside Jabel Ali Free Zone Area (JAFZA) . This option of JAFZA is catered to those customers who have large storage requirements and B2B movements internationally.

Warehouse



Temperature Control Storage

22 - 24 degree



Freezer

-18 to 0 degree

Chiller

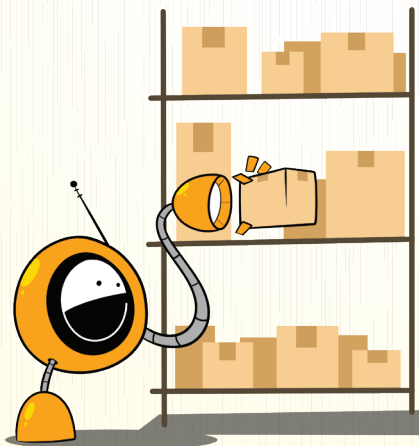
-5 to +5 degree





Powerful network of fulfillment centres

At CSS eLogix we have a powerful resource pool of growing fulfillment centres, and we help you determine optimal inventory placement to improve delivery speeds and reduce shipping costs. Each of our warehouses can be remodelled or scaled to stock additional inventory as and when required, hence giving customer the chance to customize and grow with us.



- We can give you competitive storage rates for your e-commerce inventory.
 - Easy-to-understand pricing.
 - Wide range of fulfillment services enabled in each warehouse/centre.
 - Transparency of performance for accountability.
 - All warehouses are equipped with safety devices, handheld scanners, security cameras, and racks.
- 

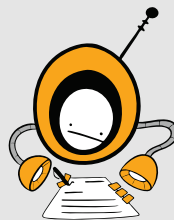
Last Mile Delivery Partners

We demand a fast paced, efficient, and transparent workspace at our fulfillment centre and as a result we tend to ensure this ethos are followed even with our last mile partners. Once when an order is picked, packed, and dispatched, the reporting and communication between our last mile partners and our customer service personnel's play a key role in guaranteeing the orders are delivered promptly and accurately. Therefore, we have partnered with multiple courier companies who are pioneers and market leaders in delivery modes, and they help us deliver our goods with the same vision and commitment we share here at eLogix.

Our last mile partners distribution scope extends for local UAE & remote area deliveries, within GCC and internationally.



Safe & Reliable



Provide Delivery
Proof



Real Time
Delivery Status



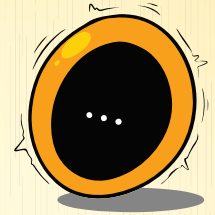


CSS eLogix offers extensive features to our clients for delivering their goods to their customers through the partners we use. Hence our features include:

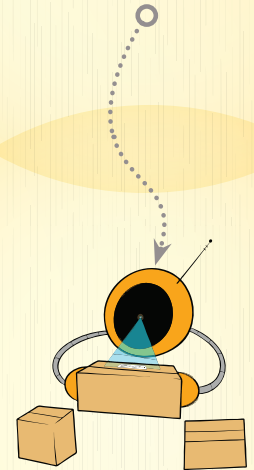
- Live interaction with our last mile partner during deliveries.
- Uninterrupted services to remote area zones within UAE.
- Cash on Delivery (COD) options.
- Temperature Controlled Boxes for Product Integrity and Safety.
- Monthly client reporting to help improve last mile partners services through business analysis of complaints and error prone deliveries.
- Real time updates on client dashboard for order detail.

Innovative Solutions

“While fulfillment used to be about performing receiving, picking, packing, and shipping without error, speed is now paramount both in terms of warehouse operations and the flow of data within the supply chain along with client transparency. When supply doesn't keep up with demand, or when delivery estimates are too far out, it becomes a major competitive disadvantage in a way that it wasn't even a decade ago. In pursuance of broadening the spectrum of logistics services, this component details the technology based, scalable and innovative solutions that ensure agreed KPI's are met from end to end while also providing vital support to clients seeking visibility and a user-friendly experience”.



Incoming Order



Scan & Pack



Order Processing

Introducing the CSS eLogix Affiliation with What3Words



CSS eLogix is excited to be partnering with What3Words to bring a new level of accuracy and efficiency to its logistics services. By using What3Words, CSS eLogix can offer its customers a more reliable & streamlined delivery experience. We look forward to continuing to innovate & improve our services in the future.

What is What3Words?

What3Words is a unique location technology that has divided the world into 3m x 3m squares and assigned each square a unique three-word address. This means that any location on the planet can be pinpointed using just three simple words.



What are the benefits of using What3Words?

By using What3Words, CSS eLogix can provide its customers with a more accurate & efficient logistics service. Traditional address systems can often be imprecise or difficult to navigate, but with What3Words, there is no room for error. What3Words also helps to reduce delivery times by enabling drivers to find exact locations quickly & easily.

How will CSS eLogix be using What3Words?

CSS eLogix will be incorporating What3Words into its logistics operations, allowing customers to provide their exact delivery location using a three-word address. This will help to ensure that packages are delivered to the correct location every time, reducing the risk of missed or delayed deliveries. CSS eLogix will also be using What3Words to optimize its routes & streamline its delivery process, further improving its logistics services.



API Integration

Integrate with online platforms

We connect inventory and orders of online stores and e-commerce platforms with our technology using our readily built APIs



Omni Channel Stock management

Omnichannel retail expertise

The big E-commerce push post-pandemic has been immense due to the comfort and ease at which an individual can purchase anything online with just a click of a button. The most valuable customers for brands and retailers typically browse, buy and expect services both online and offline thus leading to a service offering that shows no sympathy if the level drops below a certain standard. Coss elogix empowers your brand to seamlessly integrate physical and digital worlds to deliver outstanding and often previously unimaginable customer experiences that lead to profitable growth. Now you can have a single inventory (Omni channel) to sell across multiple channels consisting of brick and mortar stores, e-com platforms and Market places flawlessly



Order management

Instant fulfillment

Our technology directs online orders to our dark store nearest to the end customer where the picking and packing is done. These dark stores will be used as crossdocking centers as well.

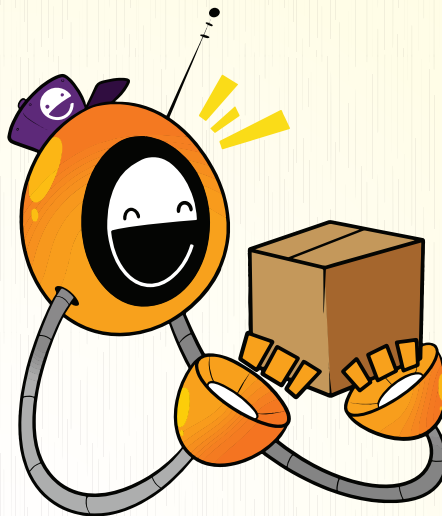


Delivery management

On demand or same day

We prepare online orders and delivery it in one hour, two hours, same day or as preferred by online stores and e-commerce clients.

End to End Customer Experience



We care about the customer experience as much as you and strive to be an extension of your team. From custom branded boxes to free plain packaging, CSS eLogix works with you to provide an unboxing experience you want. We also help you offer the fastest, most cost-effective shipping options to meet your customer expectations.

As soon as an order ships, tracking is pushed back to your store. We also offer return management services, allowing customers to generate return shipping labels and track returns, while getting your products processed and back into your available inventory as efficiently as possible.

Top ERP Functionalities



1. Customized client dashboard



2. B2B/B2C omni-channel processing capabilities



3. Multi-level SKU storage options (box, sub box, pieces)



4. Multiple LMD delivery option



5. Customer mobile app



6. Stock management-automated email alert



7. Ti:Me BOT assistance

8. End to end flow capture with automated billing module



9. LOT management and expiry date management



10. API integration to all E-commerce platform / marketplace / last mile delivery



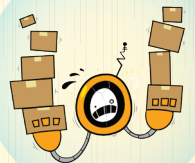
11. Trend analytics (sales, delivery)



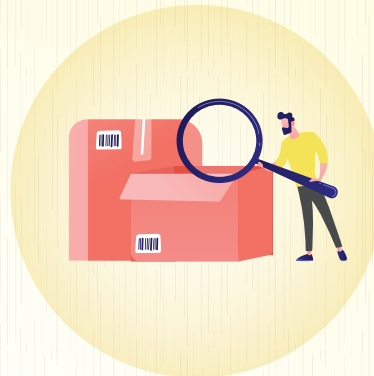
12. Multiple temperature control warehouse options



13. Easy import of goods by ASN upload



What you do?



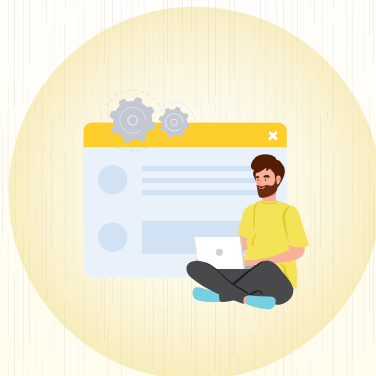
Product identification



Manufacturer deal



Product branding



Website /
Web store creation

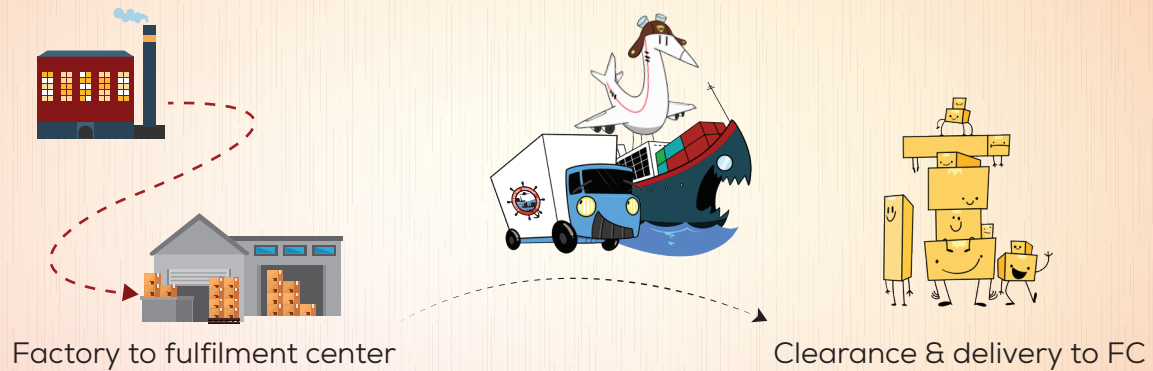


Digital marketing

Pre Production

What we do?

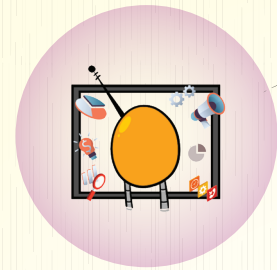
First mile



E-fulfilment center operations



Online sales



Multiple omnichannel
integrations



Live sales data
capture

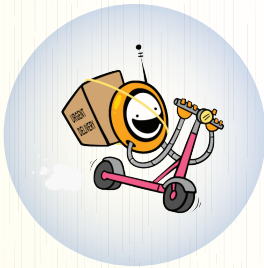


Pick & pack goods
within 15 min

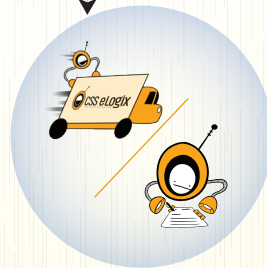


Customized packing,
Bundling, Promo
campaign possible

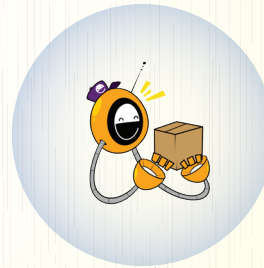
Dispatch and delivery



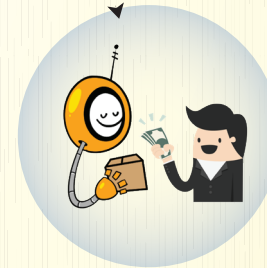
B2B, B2C dispatch with
full truck to reefer



3 hrs. express delivery,
same day or next day



Centralized GCC &
international dispatch,
deliveries at competitive rates



Cash on delivery options

Value additions



Customized dashboard
for sales analytics &
stock management



Expiry date/ stock/
Lot management enabled
with auto alert



Diminishing stock
auto alert



Multilingual and Arabic
customer service

Scan Qr Code For Download Flyers



Ecommerce -flyer



ERP-flyer



F & B-flyer



+971 4 3217703

info@csselogix.com

www.csselogix.com

Street 29 17b, Ras Al Khor industrial Area 2 Dubai, United Arab Emirates

/// finest.touched.flown